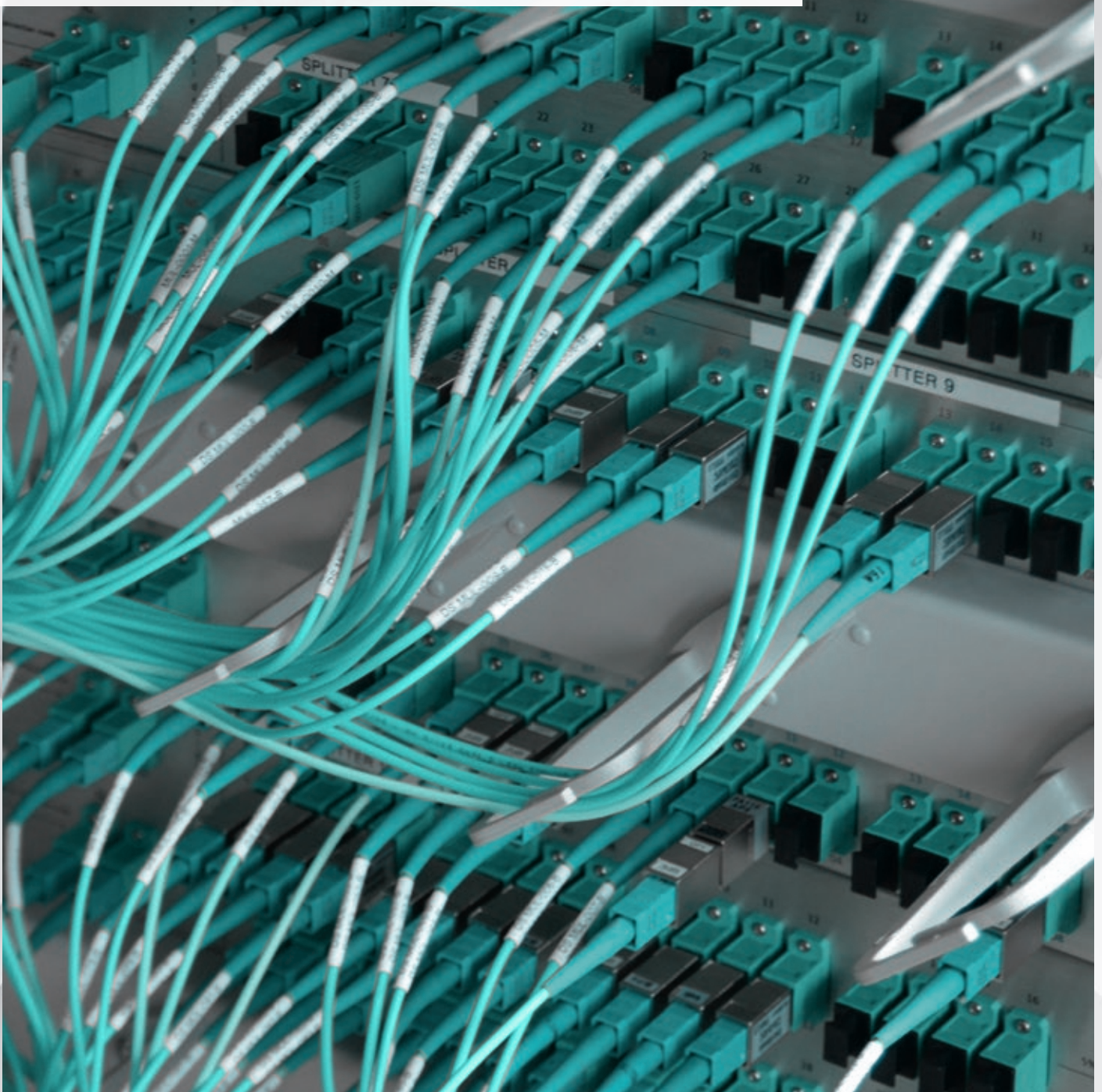




FIBER OPTIC SOLUTIONS

DIGITUS[®]
Professional



DIGITUS® Professional

SIMPLE FUSION SPLICER



- Easy to use
- For single and multimode splicing
- Suitable for FTTH applications

Target group:

- Entry device for the installer
- Additional equipment for the service technician
- Alternative to pre-terminated solutions
- Quick repairs in the industry

PRODUCT INFORMATION

This simple splicer was designed for FTTH (Fiber to the Home) use. It is easy to use, can splice singlemode and multimode fibers and has a heater for heat shrink sleeve splice protection. By its low weight and handiness it is ideal for splicing in apartments, offices and in the industrial environment. Since the splicer has only 3 control buttons and is normally used in automatic mode, you only need one button for the actual splice. This makes the fusion splicer very easy to use.

PRODUCT NUMBER

Simple Fusion Splicer

S2T-10ESH



TECHNICAL PROPERTIES

FOR FIBERS:	SM (ITU-T G.652), MM (ITU-T G.651)
CABLE:	9 / 50 / 62,5 / 125 µm, Sheath diameter 250 and 900 µm
SPLICE LOSS:	0.03dB (SM), 0.01dB (MM) (typical)
SPLICE TIME:	Approx. 7 s for standard SM fiber
SPLICE MODES:	Auto for SM and MM
SPLICE PROTECTION:	Heater
MONITOR:	LCD 2,8"
BATTERY POWER:	Approx. 60 splices (typical)
POWER SUPPLY:	Li-Battery 6V, 125 mA, AC100-240 V
SIZE:	230×98×53 mm
CASE WEIGHT:	2 kg
CASE SIZE:	340×290×80 mm
COLOR:	Orange/black
WEIGHT:	800 g

DIGITUS® Professional

S2TECHNOLOGY FIBER OPTIC VIDEO INSPECTION MICROSCOPE



PRODUCT INFORMATION

The DIGITUS® Fiber Optic Video Inspection Microscope (S2T-8500H) is the ideal tool for proving connector area. Polluted or scratched connector areas often cause high attenuation value. The fiber microscope can prove if the cleaning is successful or the connector areas have serious scratches which lead to replace the cable. It characterizes an easy handling as well as saving sharp photos, videos of the connector areas thank to its 4x digital zoom. (Quantity is depending on storage place of SD card)

3,5" DISPLAY

Video Inspection Microscope, with 3,5" TFT and 8 GB SD Card for LC, SC, ST FC, E2000 Connector. The S2T-8500H is a handheld microscope specifically designed for fiber optic connector end face inspection.

TECHNICAL PROPERTIES

DISPLAY:	3,5" TFT
DIMENSION:	170×100×40 mm
WEIGHT:	200 g
LIFE OF BATTERY:	Up to 3 hours
STORAGE:	SD Card 8GB
OPERATING TEMP. RANGE:	-20°C to 50°C
ZOOM:	4× digital

PRODUCT NUMBER

S2Technology Fiber Optic Video Inspection Microscope S2T-8500H



DIGITUS® Professional

KEVELAR CLIPPER

This clipper is ideal to cut Kevelar in a Fiber Optic Cable. The design is ergonomic.



Product number

DN-FO-KC

DIGITUS® Professional

FIBER OPTIC STRIPPER

The Fiber Optic Stripper is used for Fiber Optic Cables from 10 to 30 mm diameter. It is used for across and longitudinal stripping.



Product number

DN-FO-FS3

DIGITUS® Professional

ROUND CABLE STRIPPER

The perfect and reliable helper - Long life blade design - Controlled cutting action. Round Cable Stripper, for smaller diameter cables; (4.5 - 29 mm). Fiber Optic cables - excellent tool for precise jacket stripping of fiber optic cables.



Product number

DN-FO-S4

DIGITUS® Professional

FIBER OPTIC STRIPPER

This Fiber Optic Stripper is special for FTTH-Cable. It is to use for 2 cores OS2 (9/125 µm).



Product number

DN-FO-FS2

DIGITUS® Professional

FIBER OPTIC STRIPPER

This Fiber Optic Stripper has three holes for stripping Fiber Optic cables. It is to use for 2 mm Jacket, 0,9 mm Buffer and 0,25 mm Coating.



Product number

DN-FO-FS1

DIGITUS® Professional

S2TECHNOLOGY OPTICAL FIBER CLEAVER

Optical Fiber Cleaver, bare fiber diameter 0.25 mm ~ 0.9 mm, single tube and ribbon fiber. Optical Fiber Cleaver Easy to use, convenient, rotating blade, no position limited, Highprecision cutting.



Product number

S2T-TC500

DIGITUS® Professional

SPLICE BOX, EQUIPPED WITH LC DUPLEX COUPLERS



PRODUCT INFORMATION

Cable strap and PG screw connection, 4 possible entries with PG screw connection, Measurements (H×W×D): 44.45 (1U)×483 (19")×280 mm

HOUSING:

Full metal varnished light grey (RAL 7035) or black (RAL 9005, please add an -B behind the article number), Numbers as screen printing

FRONT PLATE:

483 mm (19") with mounted LC Duplex Couplers (plastic housing)

LAYOUT:

Up to 48 fibers / 4× splice cassettes

SCOPE OF DELIVERY AND PACKAGING

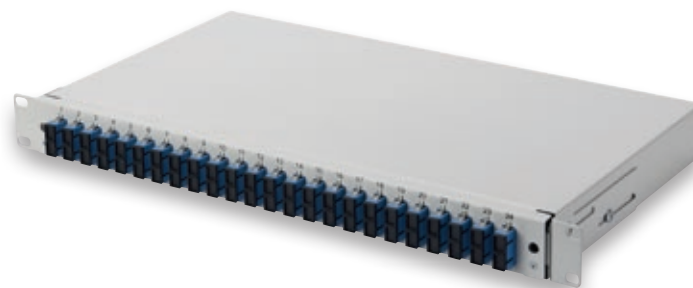
Splice Box with lid and LC Duplex Couplers,
1 PG 13.5 screw connection, Packed in a box

SPLICE BOX, EQUIPPED WITH LC/DX COUPLERS AND PIGTAIL SETS			
	6 LC Couplers	12 LC Couplers	24 LC Couplers
OM3	DN-96330/3	DN-96331/3	DN-96332/3
OM4	DN-96330-4	DN-96331-4	DN-96332-4
OS2	DN-96330/9	DN-96331/9	DN-96332/9

SPLICE BOX, PARTIALLY EQUIPPED WITH LC/DX COUPLERS			
	6 LC Couplers	12 LC Couplers	24 LC Couplers
OM3	DN-96430/3	DN-96431/3	DN-96432/3
OM4	DN-96430-4	DN-96431-4	DN-96432-4
OS2	DN-96430/9	DN-96431/9	DN-96432/9

DIGITUS® Professional

SPLICE BOX, EQUIPPED WITH SC DUPLEX COUPLERS



PRODUCT INFORMATION

Cable strap and PG screw connection, 4 possible entries with PG screw connection, Measurements (H×W×D): 44.45 (1U)×483 (19")×280 mm

HOUSING:

Full metal varnished light grey (RAL 7035) or black (RAL 9005, please add an -B behind the article number), Numbers as screen printing

FRONT PLATE:

483 mm (19") with mounted SC Duplex Couplers (plastic housing)

LAYOUT:

Up to 48 fibers / 4× splice cassettes

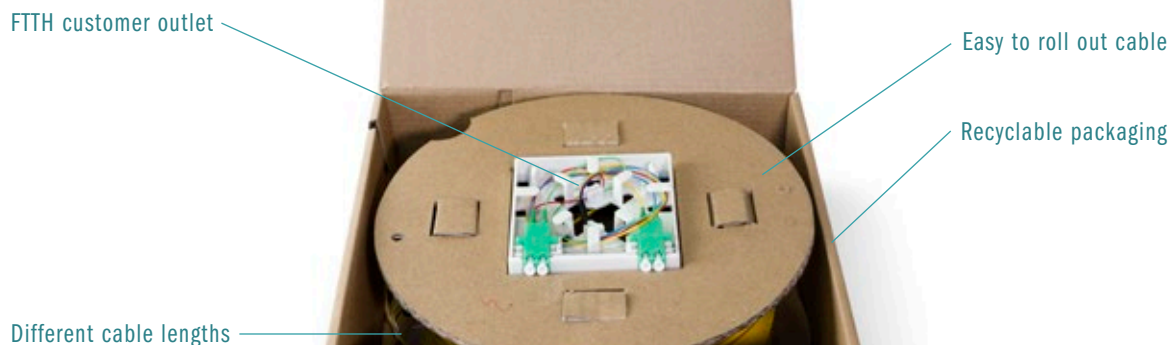
SCOPE OF DELIVERY AND PACKAGING

Splice Box with lid and SC Duplex Couplers,
1 PG 13.5 screw connection, Packed in a box

SPLICE BOX WITH SC/DX COUPLERS AND PIGTAIL SETS			
	6 SC Couplers	12 SC Couplers	24 SC Couplers
OM3	DN-96320/3	DN-96321/3	DN-96322/3
OM4	DN-96320-4	DN-96321-4	DN-96322-4
OS2	DN-96320/9	DN-96321/9	DN-96322/9

SPLICE BOX, PARTIALLY EQUIPPED WITH SC/DX COUPLERS			
	6 SC Couplers	12 SC Couplers	24 SC Couplers
OM3	DN-96420/3	DN-96421/3	DN-96422/3
OM4	DN-96420-4	DN-96421-4	DN-96422-4
OS2	DN-96420/9	DN-96421/9	DN-96422/9

DIGITUS® Professional
INSTALLATIONS KIT



PRODUCT INFORMATION

This Fiber Optic Installations Kit is ideal for FTTH (Fiber to the Home) installation in apartments. A pre-installed outlet with LC/APC couplers is in an packaging, which allows you to quickly pull the cable.

TECHNICAL PROPERTIES

OUTLET DIMENSION: 86×86 mm



PRODUCT NUMBER

	Fibers	Couplers	Length
DN-K931087-10	2	1 LC	10m
DN-K931087-20	2	1 LC	20m
DN-K931087-30	2	1 LC	30m
DN-K931087-50	2	1 LC	50m
DN-K9310872-10	4	2 LC	10m
DN-K9310872-20	4	2 LC	20m
DN-K9310872-30	4	2 LC	30m
DN-K9310872-50	4	2 LC	50m

www.digitus-professional.com
info@digitus-professional.com

All brand names and logos that are mentioned are trademarks or registered trademarks of the respective owners. The right to make design-related variations from the photos, mistakes and technical changes is reserved. All information is provided without guarantee. We assume no liability for printing errors. The right to delivery is reserved and subject to availability. 10/2017

Distributed by

ASSMANN Electronic GmbH

Auf dem Schüffel 3
58513 Lüdenscheid, Germany
Tel: +49 2351 554 0
Fax: +49 2351 554 865