

ENVIRON

The new, high performance rack system from Excel

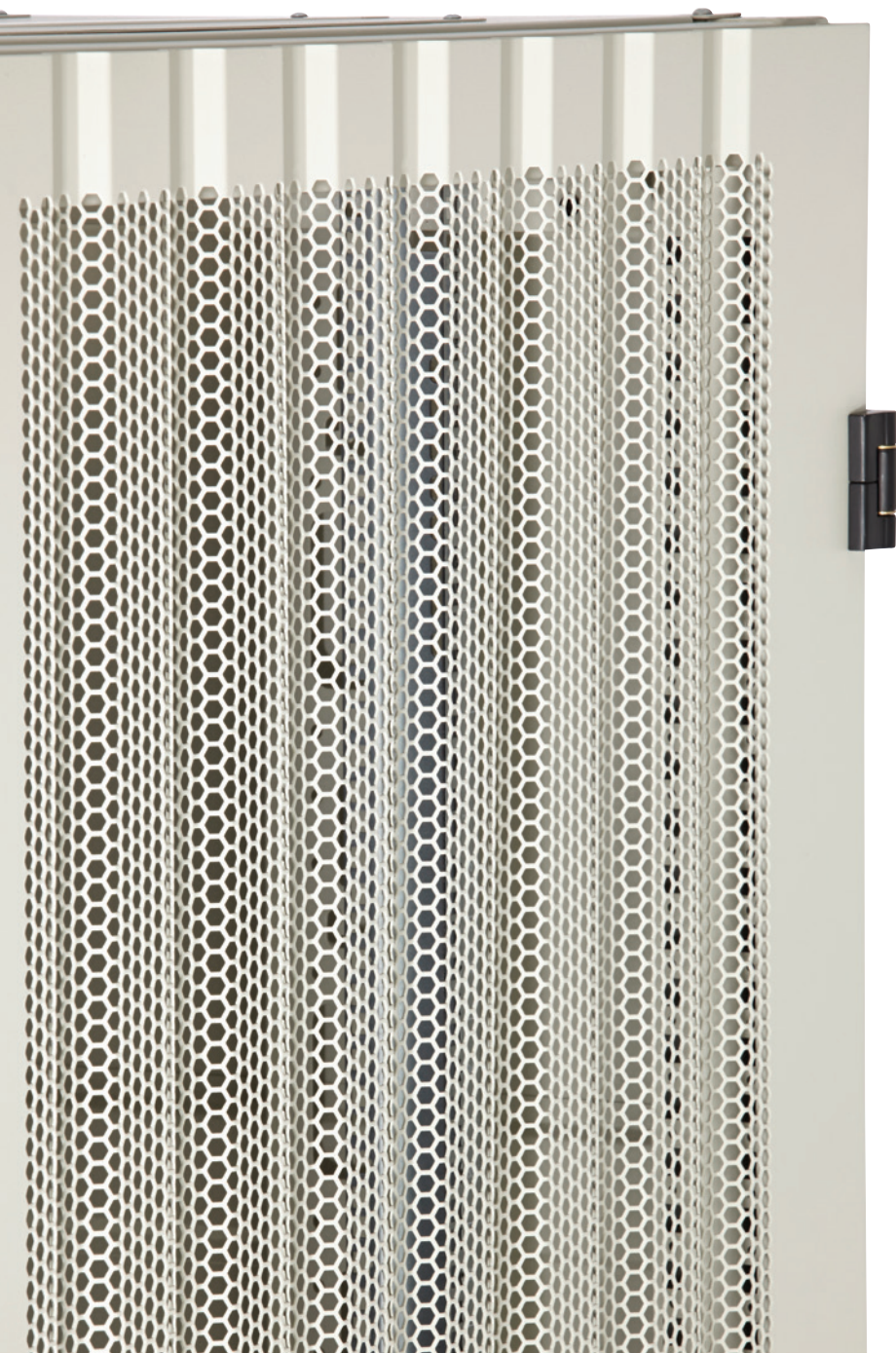
The Environ range of racks and open frames from Excel are designed to make installation and ongoing use quick, easy, and efficient.

The breadth of designs and products available make them ideal for a wide range of applications in the enterprise, data centre, security and professional audio visual market.

Simplicity by design
Performance by design
Flexibility by design
Specification by design
Services by design

excel
without compromise.

www.excel-networking.com/environ



ENVIRON

Meaning: v. formal. Surround; Enclose.

The Environ range of racks and open frames from Excel are designed to make installation and ongoing use quick, easy, and efficient. The breadth of designs and products available make them ideal for a wide range of applications in the enterprise, data centre, security, and professional audio visual market.

The Environ family at a glance:



Simplicity by design

- Logical part numbering scheme to make specification and ordering quick and easy
- Online CR, ER and SR series configurator to make enquiring and ordering quick and easy
- Quick release front and rear door hinge system
- Baying kit, jacking feet and load bearing castors included with all CR, ER and SR racks
- 19" profiles can be moved quickly and easily without being removed

Performance by design

- Multipoint locking system standard on ER and SR range
- Rack loading capacity of up to 1300kg
- Mesh doors provide in excess of 70% ventilation
- Manage in excess of 1500 Category 6 cables in high density vertical management
- Managed rack mount power distribution units

Flexibility by design

- Choose from 5 different ranges of rack and frame
- Choose from multiple heights, widths and depths
- Purchase assembled or flat pack
- Bay CR and ER cabinets together where necessary
- Modular power distribution units enable socket mix and density of your choice

Specification by design

- High density vertical management as standard in all 800mm wide CR, ER and SR racks
- Improved features and range of high density cable management across OR range
- Bay racks together with and without side panels
- Multiple cable access points within top and bottom plates
- Horizontally split 'top and bottom' side panels on SR range

Services by design

- 360° online photography to help you choose the ideal product for your installation
- Large stock holding across most EMEA markets
- Free next day delivery to UK Mainland
- EMEA wide sales and technical support teams
- Supported by the 25 Year Excel Warranty Programme

Environ CR Series



The **Environ CR** standard Comms Rack range is supplied with a glass front and steel rear door. The CR range is designed with features, and functionality which make it ideal for LAN and security cabling installations and the housing of 19" mounted equipment such as switches, routers, storage and recording devices.

Range Overview:

- 15U to 47U
- 600 or 800mm wide
- 600, 800 or 1000mm deep
- Grey White or Black Colour
- Supplied assembled or flat pack

Key Features:

- 600kg load capacity
- Glass front door, steel rear door
- 800mm wide includes vertical cable management
- Jacking feet & castors included
- Swing handle cam lock fitted to front door
- Barrel lock fitted to rear door
- Full height front and rear adjustable 19" profiles
- 19" profiles marked with U height position
- Baying kit included
- Easy access cable entry – top and bottom
- Multiple brush strip cable entry in roof and base
- 25 year warranty when installed as part of a total Excel solution by accredited partners

Delivery:

- Large stock available for next day delivery
- Free delivery to the UK mainland



- Photograph shows the optional 300mm basket tray fitted



Environ ER Series



The **Environ ER** Equipment Rack provides the same set of design features as the CR series with the added benefit of a single wave design mesh front door and mesh style wardrobe rear doors providing, ventilation, strength, security, and great aesthetics. The ER range is ideal for the installation of cabling, networking, server and AV equipment.

Range Overview:

- 29U, 42U and 47U
- 600 or 800mm wide
- 600, 800 or 1000mm deep
- Grey White or Black Colour
- Supplied assembled or flat pack

Key Features:

- 600kg load capacity
- Wave design mesh front door with 70% ventilation
- Wave design wardrobe style mesh rear doors
- 800mm wide includes vertical cable management
- Jacking feet & castors included
- Swing handle cam lock fitted to front door
- Swing handle 3 point lock fitted to rear doors
- Full height front and rear adjustable 19" profiles
- 19" profiles marked with U height position
- Baying kit included
- Easy access cable entry – top and bottom
- Multiple brush strip cable entry in roof
- 25 year warranty when installed as part of a total Excel solution by accredited partners

Delivery:

- Large stock available for next day delivery
- Free delivery to the UK mainland



Environ SR Series



The **Environ SR** Server Rack range is designed to provide choice, functionality, and ease of use within high density server and equipment installations. With improved load bearing, split side panels, together with mesh design front and rear door options, the SR range is ideal for data centre and enterprise equipment room installations.

Range Overview:

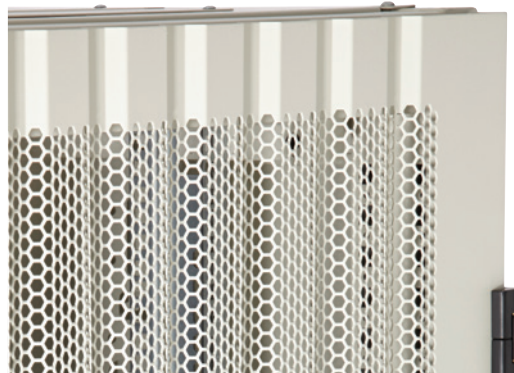
- 29U, 42U and 47U
- 600 or 800mm wide
- 1000mm or 1200mm deep
- Grey White or Black Colour
- Supplied assembled or flat pack

Key Features:

- 1300kg load capacity
- Wave design mesh front door with 70% ventilation
- Wave design wardrobe style mesh rear doors
- 800mm wide includes vertical cable management
- Jacking feet & castors included
- Swing handle cam lock fitted to front door
- Swing handle 3 point lock fitted to rear doors
- Full height front and rear adjustable 19" profiles
- 19" profiles marked with U height position
- Baying kit included
- Easy access cable entry – top and bottom
- Sliding letterbox style cable entry in roof
- 25 year warranty when installed as part of a total Excel solution by accredited partners

Delivery:

- Large stock available for next day delivery
- Free delivery to the UK mainland



Environ OR Series



The **Environ OR** Open Rack solution has been refreshed to provide an even greater choice of vertical and horizontal cable management and is an ideal solution where there is a secure environment for the installation of high density copper and optical cabling.

2 Post Rack Overview:

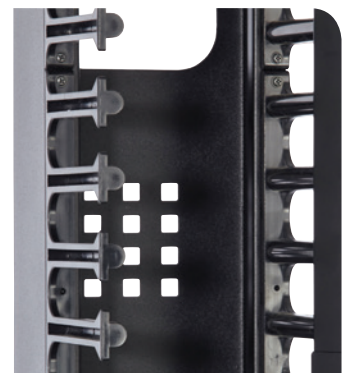
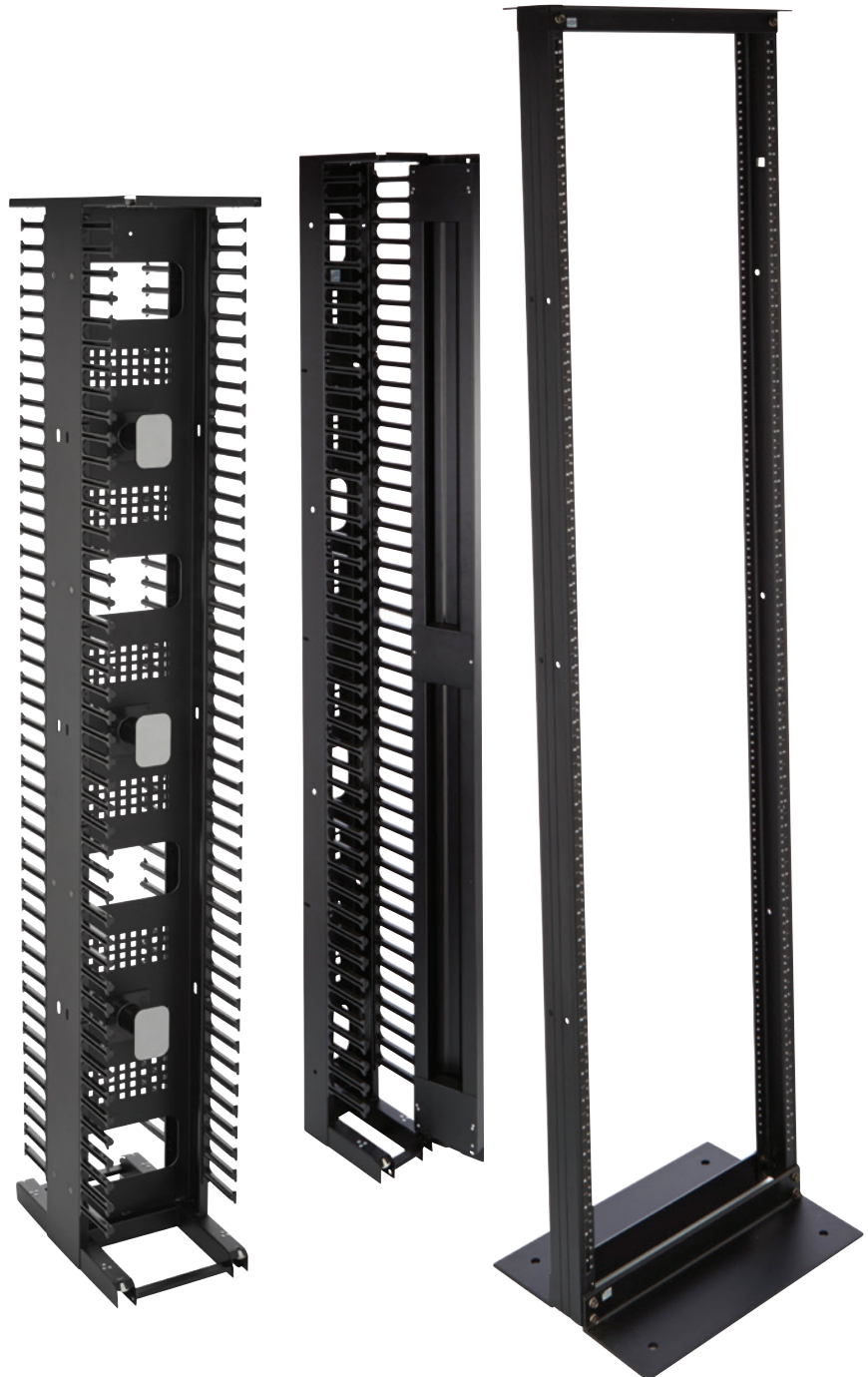
- 42U, 48U and 52U
- 1500kg static load capacity
- 2 post rigid aluminium construction
- M6 conductive threaded 19" profiles for fast installation
- Heavy duty top and base cross members
- Aluminium construction
- Available with adjustable depth profiles
- 25 year warranty when installed as part of a total Excel solution by accredited partners

High Density Cable Management:

- Vertical design available in range of depth and width options
- Vertical design available in 42U, 48U and 52U
- Lockable aluminium double hinge doors on vertical designs
- Horizontal design available in 2 and 3U heights
- Manage in excess of 1500 Category 6 cables
- Rounded cable management fingers to avoid cable damage
- High quality, strong ABS cable management fingers

Delivery:

- Supplied as flat pack
- Large stock available for next day delivery
- Free delivery to the UK mainland



Environ WR Series

The **Environ WR** range of wall racks provide a wide choice of depths and heights. The WR series is designed for the installation of both cabling and equipment across a range of applications and are ideal for the housing of cabling, security and AV equipment.



Range Overview:

- 6U to 21U
- 390, 500 & 600mm deep
- Grey or Black Colour
- Supplied assembled or flat pack

Key Features:

- Aesthetically pleasing framed safety glass front door
- Angled vented roof
- Quick release doors and side panels
- Adjustable front and rear 19" mounting profiles
- Removable cable entry panel in top and base.

Delivery:

- Large stock available for next day delivery
- Free delivery to the UK mainland



Power Distribution Units

To complement the Environ rack range Excel offers a full range of Power Distribution Units (PDUs) that are available as:

- Intelligent
- Modular
- Standard in a range of socket styles
 - Standard BS1363 style socket
 - Surge Protected BS1363 and IEC 320 style socket
 - EN 60309 style socket (BS4343)
 - IEC 320 style socket
 - Schuko style socket
 - IEC 60320 C14
- 3 year warranty when installed as part of a total Excel solution by accredited partners



excel
without compromise.

For further information on the Environ range please visit www.excel-networking.com or contact the Excel head office at +44 (0)121 326 7557 or your local Excel distributor.