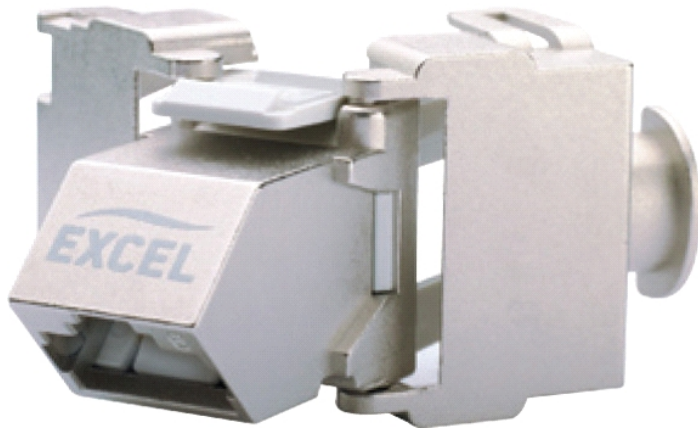


Excel Category 6A Shielded Twisted Pair (STP) Angled Keystone Jack - Toolless

excel
without compromise.



X 25 Year System Warranty

X Low Profile - 28mm overall depth

X 360° Screen die cast housing

X Supports 10 Gigabit Ethernet

X EC Verified

X Unique Angled Facia

Features

X 25 Year System Warranty

X 360° Screen die cast housing

X Toolless termination

X 360° Shielding protects against alien crosstalk

X EC Verified

X Suitable for patch panel mounting

X Angled design assists patch cable management

X Low Profile - 28mm overall depth

X Supports 10 Gigabit Ethernet

X Lifetime Product Warranty

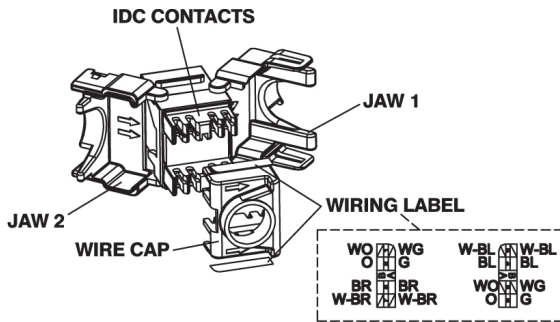
X 3rd Party ISO11081 2nd Edition verification

X Unique Angled Facia

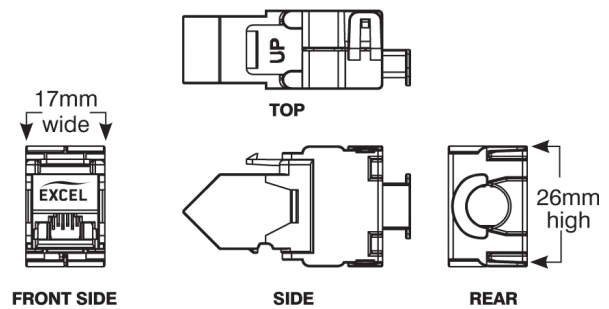
X Ideal for high density cabling installations

Product Overview

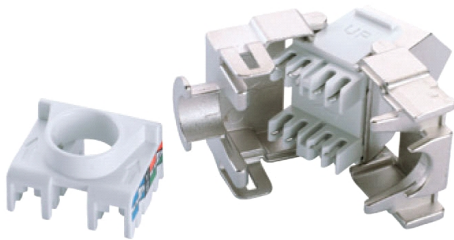
The Excel Category 6A Shielded Twisted Pair (STP) Keystone angled Jack, is a toolless termination RJ45 socket suitable for mounting in patch panels. The angled design of the socket face makes this product ideal for high density frames. Traditional horizontal patch cable management bars can be removed or reduced in number as the leads follow a natural route to the left or right of the panel and the cabinets vertical management. To the rear of the socket the design is exactly the same as the excel keystone range, enabling standard termination and cable dressing practices to be followed. The socket itself is housed in a high quality zinc die cast housing, which opens at the rear in a butterfly manner to reveal the IDC termination points. Once the conductors of the cable to be terminated are fed into a management cap the process is completed by snapping the 'butterfly wings' together with minimal, but firm pressure. Patch Panel frames with 24 port density in both black and chrome are available.



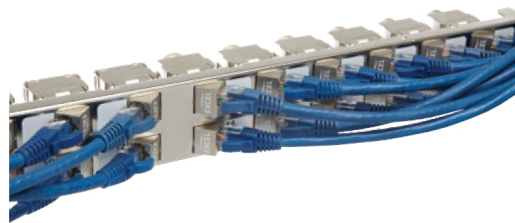
A. Rear view of Keystone



B. Keystone profiles



C. Rear view of Keystone with wire cap



D. Keystone Jacks mounted in chrome style patch panel

Performance Overview

The Excel Category 6A keystone angled jack is designed and manufactured to comply with the channel requirements of Augmented Category 6/Class EA specifications as defined in ISO 11801 2nd edition amend 1.1, and TIA/EIA-568-B.2-10 standards. A range of performance characteristics are tested upto 500Mhz including return loss, attenuation, and near end cross talk (NEXT) and far end cross talk (FEXT). Both worst case and power sum test methods are applied. The product design incorporates staggered 50 micron plated contact pins within the jack to ensure optimum performance levels are achieved, the die cast housing around the terminated pairs ensures Alien Crosstalk is minimised. Support of emerging applications such as 10 Gigabit Ethernet is guaranteed over channel distances of upto 100 metres. The keystone jack is fully interoperable and backward compatible with Category 5e and Category 6 products.

NB. All patch panels are supplied with cage nuts, earth cable, and rear management tray

Typical Applications

- IEEE802.3 1000BASE-T Gigabit Ethernet
- Digital and analogue video
- IEEE802.3an 10GBASE-T 10 Gigabit Ethernet
- 1.2/2.4Gbs ATM

Performance / Specification Table

Specification	· ISO/IEC 11801, EN 50173:2007, ANSI/TIA -568-C:2009
Wiring Specification	T258A/B
Dimensions	17mm wide x 49mm deep x 26mm high
RJ45 Jack	Min life 750 insertions
RJ45 Jack	50 Microinch Gold Plated contact pins
NEXT at 500MHz	Category 6A 39.10dB @500MHz (Power Sum)
EL FEXT at 500MHz	Category 6A 27.00dB @500MHz (Power Sum)

Electrical performance meets or exceeds channel requirements as defined in the latest Category 6A, specification documents, ISO/IEC 11801: 2002 Class EA amendment, and ANSI/TIA-568-C, when installed with Excel Category 6A cable.

Part Numbers

Part No.	Description
100-185	Category 6A Screened STP Angled Keystone Toolless Jack, Butterfly Style

EC verified. This product has been tested by the Delta EC Cabling Group and complies with the following standards - ISO/IEC 11801:2002 amendment 1 Class EA, ISO/IEC TR 24750, ANSI/EIA/TIA-568-b.2-10 and ANSI/TIA/EIA TSB-155. For copies of test certification please contact your local Excel distributor, or visit www.excel-networking.com or www.delta.dk. Delta technical report N312480, Danak -19J1944 screened 4 connector channel model.

Part Numbers

Part No.	Description
100-024	24 port angled unloaded 1U chrome FTP keystone frame

System Warranty

The Excel System Warranty provides a 25-year product and applications assurance of compliance with the industry performance standard appropriate to the class of cabling installed. The warranty may be applied for by an accredited Excel Partner who has designed, supplied and installed the said system.



Excel is a world-class premium performing end-to-end infrastructure solution - designed, manufactured, supported and delivered - without compromise.

Contact us at sales@excel-networking.com



E&OE. Excel is a registered trade name of Mayflex Holdings Ltd.

www.excel-networking.com