

# DCS-4500-24F Dual Stack Optical Ethernet Switch Datasheet



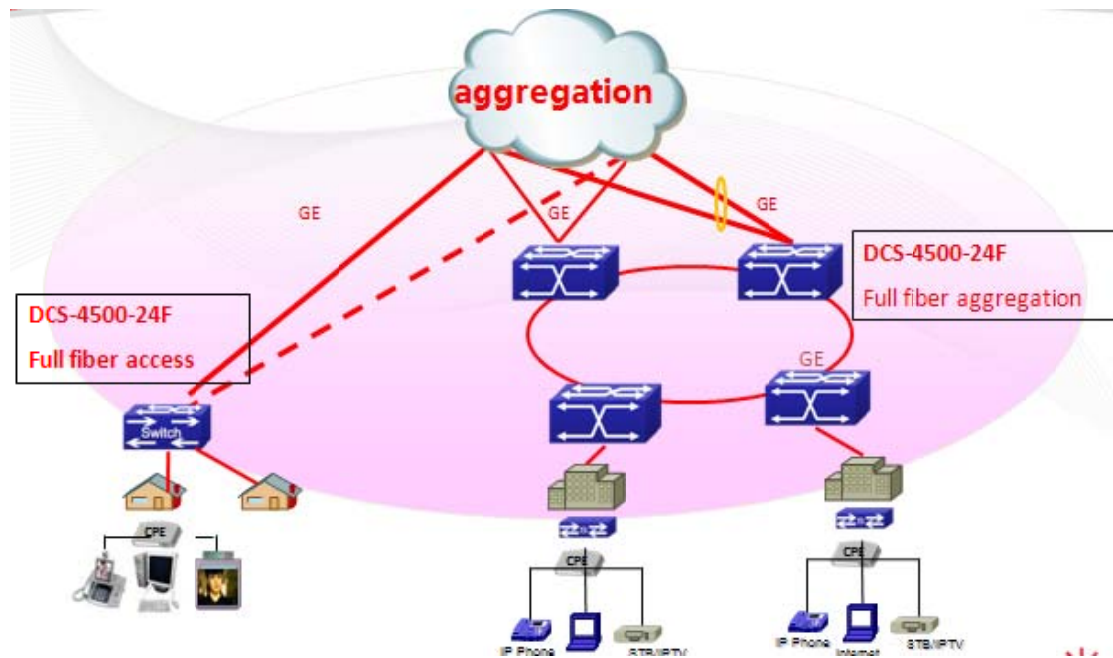
DCS-4500-24F

## ■ Product Overview

DCS-4500-24F switch full gigabit optical Ethernet Layer 2 switch for carrier and MAN networks. They support dual stack(IPv4/IPv6), comprehensive QoS, enhanced Vlan functions (Multicast Vlan, Voice Vlan, QinQ, etc), classified bandwidth control, multiple link aggregation, intelligent security control. It is ideal for the Metro Ethernet market, using in the access layer of three-tier networks provides long distance fiber connections to end user to provide Triple play service. It also an excellent choice as a access switch for large enterprises to provide full fiber access.

The DCS-4500-24F supports IPv6 with hardware and passes the IPv6 form certification Phase II. With the abundant ipv6 features, the product can still work for next generation network.

## ■ Application



## ■ Key Features and Benefits

### ➤ Performance and Scalability

With high switching capacity, the DCS-4500-24F series switch supports wire-speed L2 forwarding.

The SFP-based Gigabit ports support various optional 1000M/100M Ethernet mini GBIC transceivers, for different distance fiber connections.

### ➤ Powerful Multicast

The DCS-4500-24F supports abundant multicast features. The product supports rich multicast features such as IGMPv1/v2/v3 snooping etc. As the rich application experience, the product supports Multicast VLAN Registration (MVR) with VLAN and Trunk association, and multicast receiver/sender control and illegal multicast source detect functions.

### ➤ Easy high reliability network

MRPP is Multi-layer Ring Protection Protocol. It introduces Layer concept for loop at the basis of traditional loop protect protocol. Each loop layer has multiple same-level Ethernet loop networks. With multi-loop layers, it can achieve quick convergence from aggregation to access.

### ➤ Comprehensive QoS

8 queues per port enable differentiated management of up to 8 traffic types.

© 2012 Digital China Networks Inc All rights reserved. This document is DCN Public Information  
All specifications are subject to change without further notice. All features with \* mark will be available by firmware upgrade.

Traffic is prioritized according to IEEE802.1p, DSCP, IP precedence and TCP/UDP port number, giving optimal performance to real-time applications such as voice and video.

Bi-directional rate-limiting, per port or traffic class, preserves network bandwidth and allows full control of network resources.

#### ➤ **Enhanced Security**

IEEE 802.1X port-based access control and MAC-based access control ensure all users are authorized before being granted access to the network.

Access Control Lists (ACLs) can be used to restrict access to sensitive network resources by denying packets based on L2/L3/L4 headers information. And for some service is based on time, the product can support time based ACL to match the requirement.

Secure Shell (SSH) encrypts network management information via Telnet providing secure network management.

RADIUS Authentication enables centralized control of the switch and restricts unauthorized users from altering the configuration of the switch.

#### ➤ **Expedient Management**

DCS-4500-24F supports DDM (Digital Diagnostic Monitor), which makes the detailed digital diagnostic function standard in SFF-8472 MSA. DDM is more requested by carrier users.

DCS-4500-24F supports OAM to improve the effectively management mechanism, which greatly extends Ethernet application to Metropolitan Area Network and Wide Area Network by implementing OAM on Ethernet

#### ➤ **Abundant IPv6 Support**

As more network devices growing and the need for larger addressing, as well as higher security becoming critical, the DCS-4500-24F series switch will be a right product to meet the requirement. The DCS-4500-24F passed IPv6 form Phase II certificate is the best proof of the application.

### ■ **Specification**

<b>Attributes</b>	DCS-4500-24F
<b>Ports</b>	12 GE SFP ports, 12 COMBO (SFP/GT)
<b>Performance</b>	
<b>Switching Capability</b>	48Gbps
<b>Throughput</b>	36Mpps
<b>MAC Address</b>	Max 16K
<b>VLAN Table</b>	Max 4K
<b>ACL TABLE</b>	Max 1k

<b>Port Queues</b>	8
<b>Physical</b>	
<b>Dimension (WHD)</b>	440mm×44mm×325mm
<b>Relative Humidity</b>	5% ~ 90%, non-condensing
<b>Operating Temperature</b>	0℃ ~ 50℃
<b>Storage Temperature</b>	-40℃ ~ 70℃
<b>Power Supply</b>	Input AC: 100- 240V
<b>Power Consumption</b>	45 W
<b>MTBF</b>	>80,000 hours
<b>MEF Comply</b>	Comply MEF 9,14
<b>EMC safety</b>	FCC, CE, RoHS,
<b>Main Features</b>	

<b>Forwarding</b>		<ul style="list-style-type: none"> <li>Storage and forwarding</li> </ul>			
<b>L1,L2 Features</b>	<b>VLAN Type</b>	<ul style="list-style-type: none"> <li>802.1Q based Vlan and support up to 4096 Vlan</li> <li>Support QinQ, selective QinQ, Flexible QinQ</li> </ul>			
		<ul style="list-style-type: none"> <li>Support Voice Vlan, Port based Vlan, MAC based Vlan, IP subnet Vlan, Protocol based Vlan, Private Vlan</li> <li>Support GVRP</li> </ul>			
	<b>Spanning Tree</b>	<ul style="list-style-type: none"> <li>802.1D STP, 802.1W RSTP, 802.1S MSTP</li> <li>Support Root guard, BPDU guard, BPDU forwarding, BPDU Tunnel</li> </ul>			
		<ul style="list-style-type: none"> <li>Support LACP 802.3ad, max 128 groups trunk with max 8 ports for each trunk,</li> <li>Support source / destination MAC/IP based load balance</li> </ul>			
	<b>MAC Operation</b>	<ul style="list-style-type: none"> <li>Support MAC binding</li> <li>Support MAC filter</li> <li>Support MAC limit per port</li> </ul>			
		<b>Broadcast storm control</b>	<ul style="list-style-type: none"> <li>Support Broadcast / Multicast / Unicast Storm Control</li> <li>Supports control and can set rate for broadcast</li> </ul>		
			<b>Port</b>	<ul style="list-style-type: none"> <li>Support VCT &amp; DDM</li> <li>Support UDLD, LLDP, LLDP-MED</li> <li>Support 1:1 and N:1 port mirror</li> <li>Jumbo Frame (9K)</li> <li>Loopback interface</li> <li>Port loop detection</li> <li>Bandwidth control: At least 64Kbps step</li> <li>Support HOL preventing first packet jam, semi-duplex backpressure, duplex IEEE802.3x</li> <li>GE combo ports could be compatible with FE SFP module</li> <li>Port Protection</li> </ul>	
	<b>QOS Features</b>	<ul style="list-style-type: none"> <li>8 queues per port</li> <li>Support QinQ, Selective QinQ, Flexible QinQ</li> <li>Traffic classification based on IEEE 802.1p CoS, IP Precedence, DSCP, TCP/UDP port number, Access Control List</li> <li>Supports SP, WRR, SWRR, DWRR for scheduling</li> <li>Support flow shaping</li> </ul>			
		<b>IEEE 802.1x</b>		<ul style="list-style-type: none"> <li>Port, MAC based authentication</li> <li>Support account based on time length and traffic</li> <li>Support guest Vlan and auto Vlan</li> <li>Work with private client can manage P2P traffic</li> </ul>	
				<b>AAA</b>	<ul style="list-style-type: none"> <li>RADIUS for Ipv4 and Ipv6</li> <li>TACACS+ for Ipv4</li> </ul>
					<b>ACL</b>
				<b>Security</b>	

		IP type, TCP/UDP port number, IP precedence, time range, ToS.		
		<ul style="list-style-type: none"> <li>■ ACL on VLAN interface</li> </ul>		
		<ul style="list-style-type: none"> <li>■ Flow redirect based on ACL</li> </ul>		
	ARP	<ul style="list-style-type: none"> <li>■ Support ARP limit</li> <li>■ Support ARP guard</li> <li>■ Support Anti ARP scanning</li> </ul>		
		Enhanced	<ul style="list-style-type: none"> <li>■ Ip source guard</li> <li>■ Prevent illegal multicast source and limited multicast</li> <li>■ Support DHCP Snooping, and DHCP Snooping option 82</li> </ul>	
			<ul style="list-style-type: none"> <li>■ Support IGMP v1/v2/v3 snooping</li> <li>■ Support Multicast Vlan Register (MVR) based on port</li> <li>■ Support Multicast receive control</li> <li>■ Support illegal multicast source detect</li> <li>■ Support multicast policy configuration</li> </ul>	
	Multicast	<ul style="list-style-type: none"> <li>■ Support IGMP v1/v2/v3 snooping</li> <li>■ Support Multicast Vlan Register (MVR) based on port</li> <li>■ Support Multicast receive control</li> <li>■ Support illegal multicast source detect</li> <li>■ Support multicast policy configuration</li> </ul>		
IPv6		<ul style="list-style-type: none"> <li>■ ICMPv6, NDP, SNMP over IPv6, HTTP over Ipv6, Ipv6 Ping/tracer, Ipv6 Telnet, Ipv6 RADIUS+, Ipv6 Syslog, IPv6 SNTP, IPv6 FTP/TFTP</li> <li>■ Support DHCPv6 Server, Relay, Snooping</li> <li>■ Support MLD Snooping</li> <li>■ Support IPv6 MVR</li> </ul>		
		Management	Switch Management	<ul style="list-style-type: none"> <li>■ CLI, WEB, Telnet, SNMPv1/v2c/v3 through IPv4 and IPv6</li> <li>■ RMON 1,2,3,9</li> <li>■ SSHv1,v2 &amp; SSL support</li> <li>■ RJ45 Console</li> <li>■ Support Public &amp; Private MIB interface</li> <li>■ Supports SNTP/NTP, Summer Saving Time</li> <li>■ Support Multiple sys-log servers</li> <li>■ Support OAM 802.3ah</li> <li>■ Support DDM(Digital Diagnostic Monitor)</li> <li>■ Support NMS software management</li> <li>■ Support MAX 24 unites cluster</li> <li>■ Support IPv4 and IPv6 Security IP management</li> </ul>
				Firmware & Configuration
DHCP	<ul style="list-style-type: none"> <li>■ Supports BOOTP, DHCP server/client for IP address assignment</li> <li>■ Support DHCP relay, DHCP relay option 82, DHCP Snooping, and DHCP Snooping option 82</li> </ul>			

---

■ **Warranty**

Limited Life Time

■ **Order Information**

Product	Description
DCS-4500-24F	Full Gigabit switch. 12* GE SFP and 12 Gigabit Combo (SFP/GT) ports, AC power supply

■ **Connect us**

For more detail information about DCN product, contact:

URL: <http://www.DCNglobal.com>

Email: [sales@DCNglobal.com](mailto:sales@DCNglobal.com)

Address: Digital Technology Plaza, NO.9 Shangdi 9th Street, Haidian District, Beijing, China